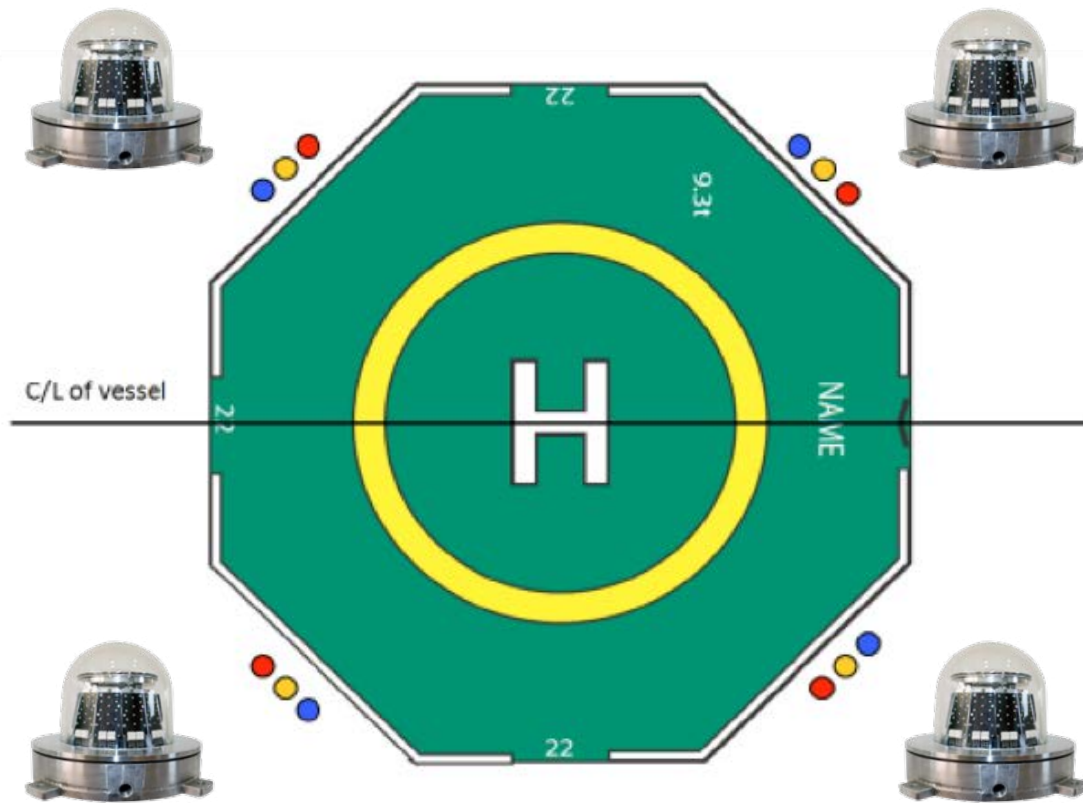


# HELIPORT LIGHTS

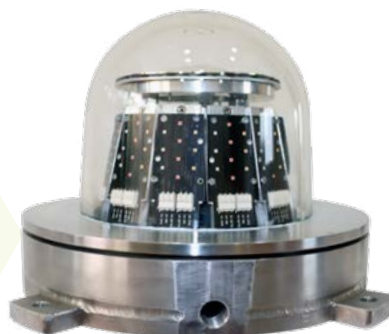
## HELIDECK MONITORING SYSTEM REPEATER STATUS LIGHTS

for Safe Area applications - Unclassified



According to **CAP437 "Standards for Offshore Helicopter Landing Areas" 8th Edition**, from 1st April 2021 all moving helidecks must be provided with a **Helideck Monitoring System** compliant with **Rev.9 or later of the standard published on the Helideck Certification Agency's website**.

The Helideck Monitoring System provides information on helideck movement and includes a helideck mounted light signalling system. **This system indicates the motion status of the helideck directly to pilots prior to landing, and provides warnings of any deterioration in conditions after landing.**



# HELIPORT LIGHTS

## REPEATER STATUS LIGHT

Tempered glass dome

Light specifically designed to comply with UK standards



Terminal box

<150mm light elevation from helideck surface

# IP66

LUXSOLAR HMS-LXS-Ex Helideck Monitoring Light System is realized as **fully in compliance with Standard Helideck Monitoring Systems and CAP437 standards.**

With a **compact body high quality materials for maximum resistance to salt-atmosphere** during the years, **high quality and ultra-bright LEDs**, customized lenses for optimum light emission, **LUXSOLAR HMS-LXS beacons are the most up-to-dated and technologically advanced lighting system for Helideck operations.**

The system comes with a **dedicated LUXSOLAR control panel that can be provided suitable for safe or hazardous area, easy and quick to install and connect to helideck Motion Monitoring System for an high performance and safe lighting system.**

### CERTIFICATION



### FEATURES



### TYPICAL APPLICATION



# HELIPORT LIGHTS

## REPEATER STATUS LIGHT TECHNICAL SPECIFICATION

### OPTICAL FEATURES

- Based on LED technology
- AMBER/RED/BLUE light in one light fixture
- FLASHING/STEADY burning mode as per CAP437
- Horizontal beam radiation: 360°
- Vertical beam spread: as per CAAi rule

### LIGHT MECHANICAL FEATURES

- Marine grade aluminum, painted RAL7035 (as option SS316L body material, natural finish)
- SS316L fixing bracket, natural finish
- Borosilicate glass cover protection
- Degree of protection: IP66
- Ambient temperature: -50°C to +60°C
- Lamp unit weight: 19Kg

### PANEL MECHANICAL and ELECTRICAL FEATURES

#### Common features:

- Complete with LUXSOLAR electronic components for HMS Repeater System operation
- Complete with 3 contacts to connect to helideck's Helideck Monitoring System (HMS)
- Power consumption for HMS Repeater Light LUXSOLAR system (4HMS lights + 1 Control Panel): 300W approx

#### Specific features for Safe Area Control Panel:

- Available in carbon steel (painted RAL7035) or SS316L (natural finish) material
- Ambient temperature: -20°C to +50°C

#### Specific features for Hazardous Area Control Panel:

- Available in SS316L (natural finish) or aluminium (painted RAL7035) material
- Ambient temperature: -50°C to +50°C

### APPLY TO

- Vessel
- Floating Production Unit
- Semi-Submersible Rig
- Floating Jack Up Rig
- Any other moving helideck

### COMPLIANCE

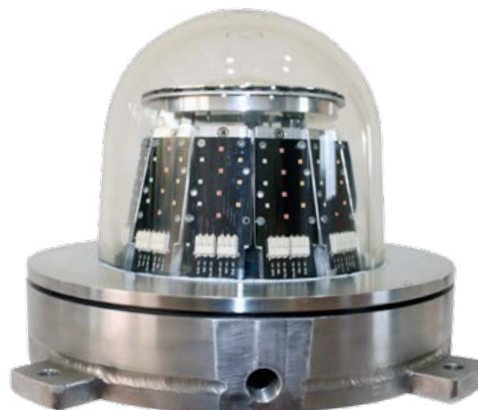
- CAP437 - Standards for Offshore Helicopter Landing Area
- Standard Measuring Equipment for Helideck Monitoring System (HMS) and Weather Data

### CERTIFICATION

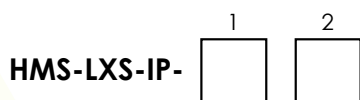
- Statement of Compliance issued by CAAi

### ORDER CODE

**HLW-LXS-IP**



### ORDER CODE

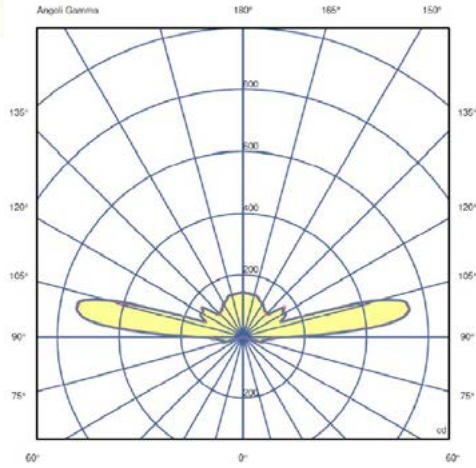


Number of lights per system = N

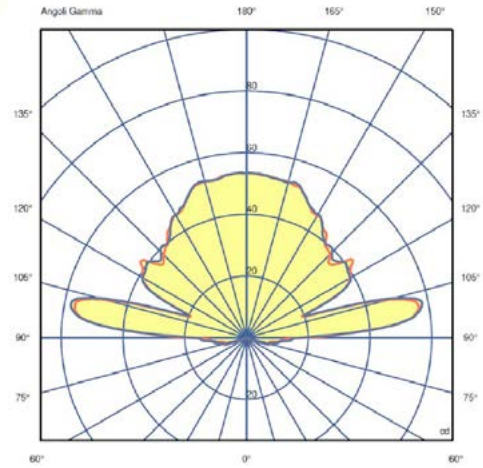
- IP = Panel suitable for safe area
- Ex = Panel suitable for hazardous area

# HELIPORT LIGHTS

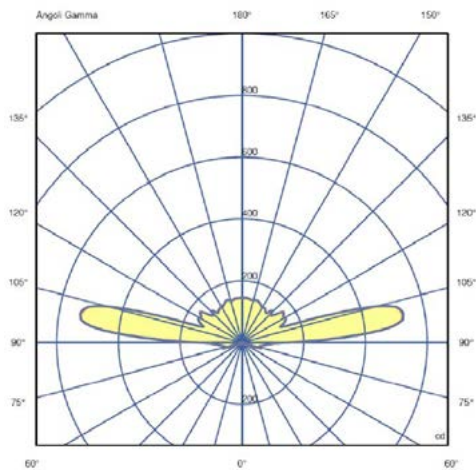
## REPEATER STATUS LIGHT LIGHT DISTRIBUTION STEADY



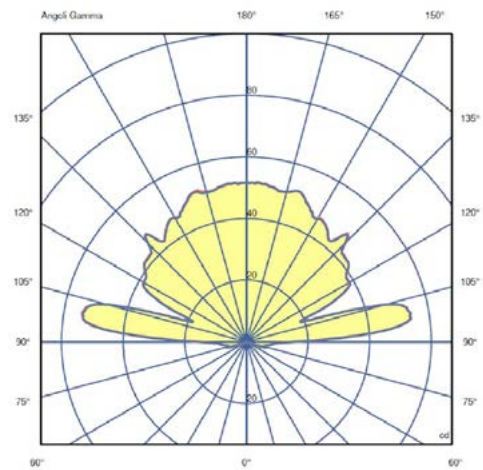
**Amber Light DAY**



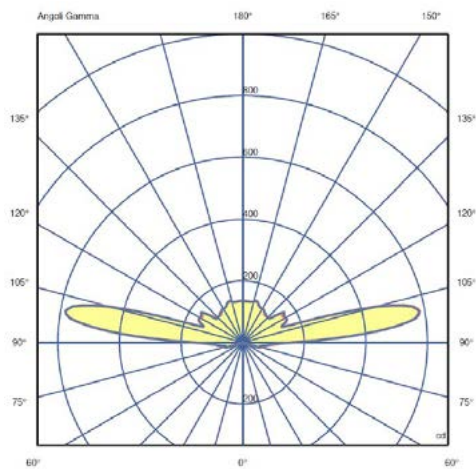
**Amber Light NIGHT**



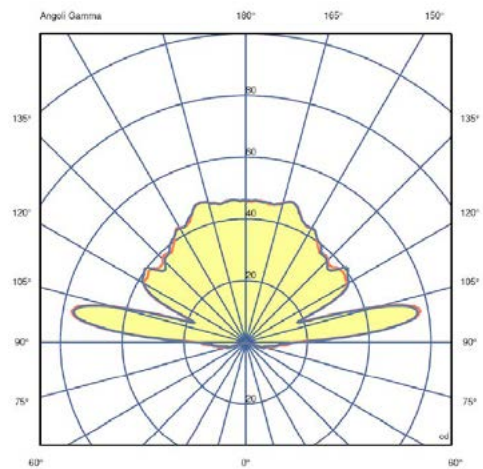
**Red Light DAY**



**Red Light NIGHT**



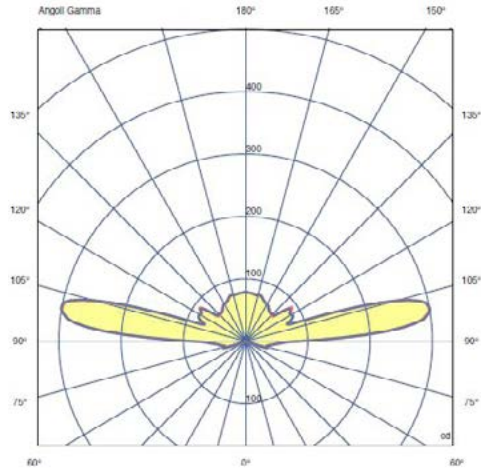
**Blue Light DAY**



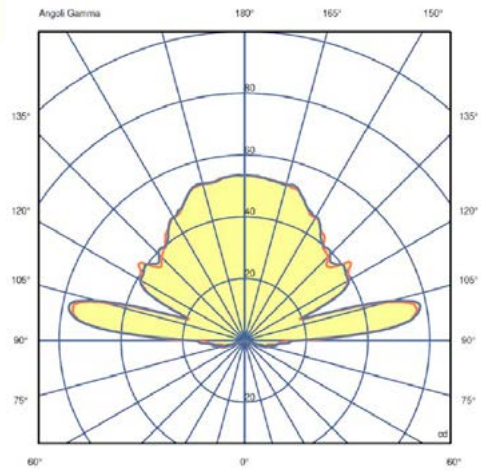
**Blue Light NIGHT**

# HELIPORT LIGHTS

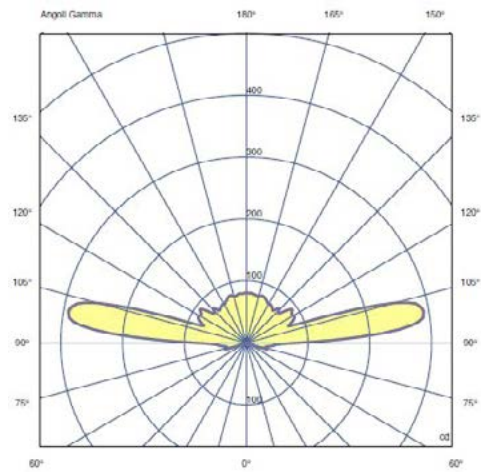
## REPEATER STATUS LIGHT LIGHT DISTRIBUTION FLASHING



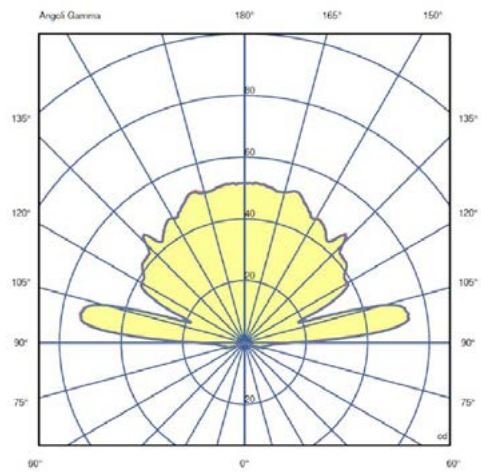
**Amber Light DAY**



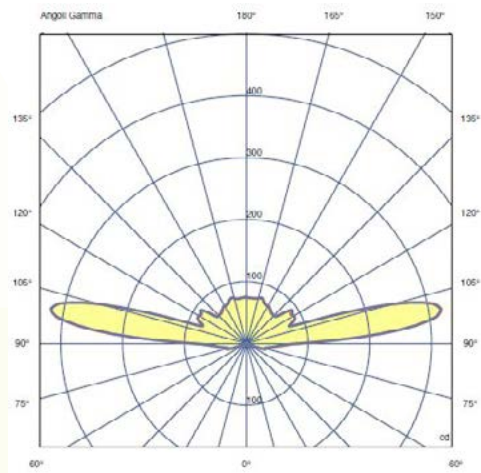
**Amber Light NIGHT**



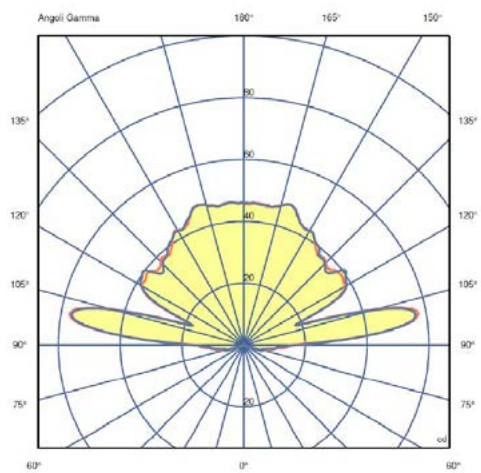
**Red Light DAY**



**Red Light NIGHT**



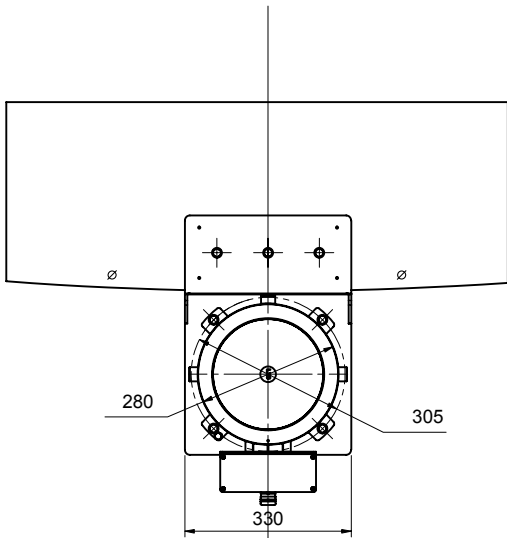
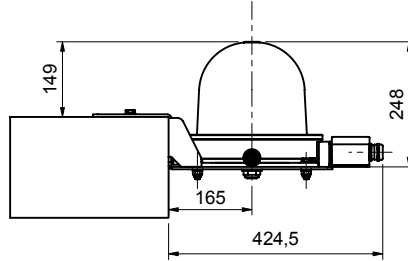
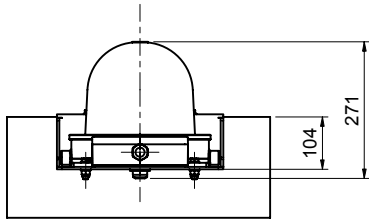
**Blue Light DAY**



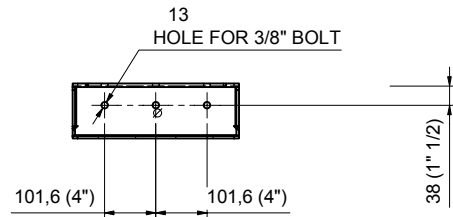
**Blue Light NIGHT**

# HELIPORT LIGHTS

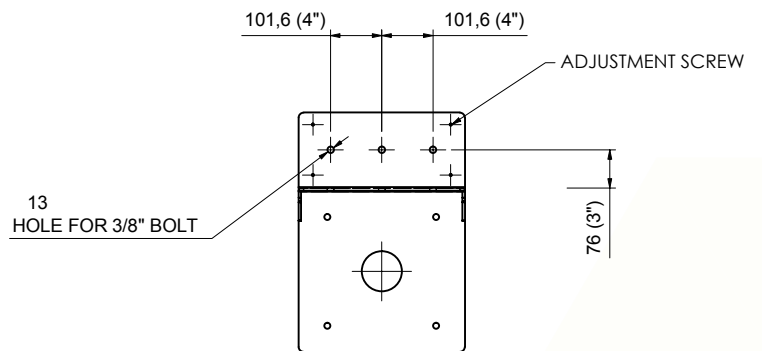
## REPEATER STATUS LIGHT TECHNICAL DRAWINGS



### LATERAL FIXING



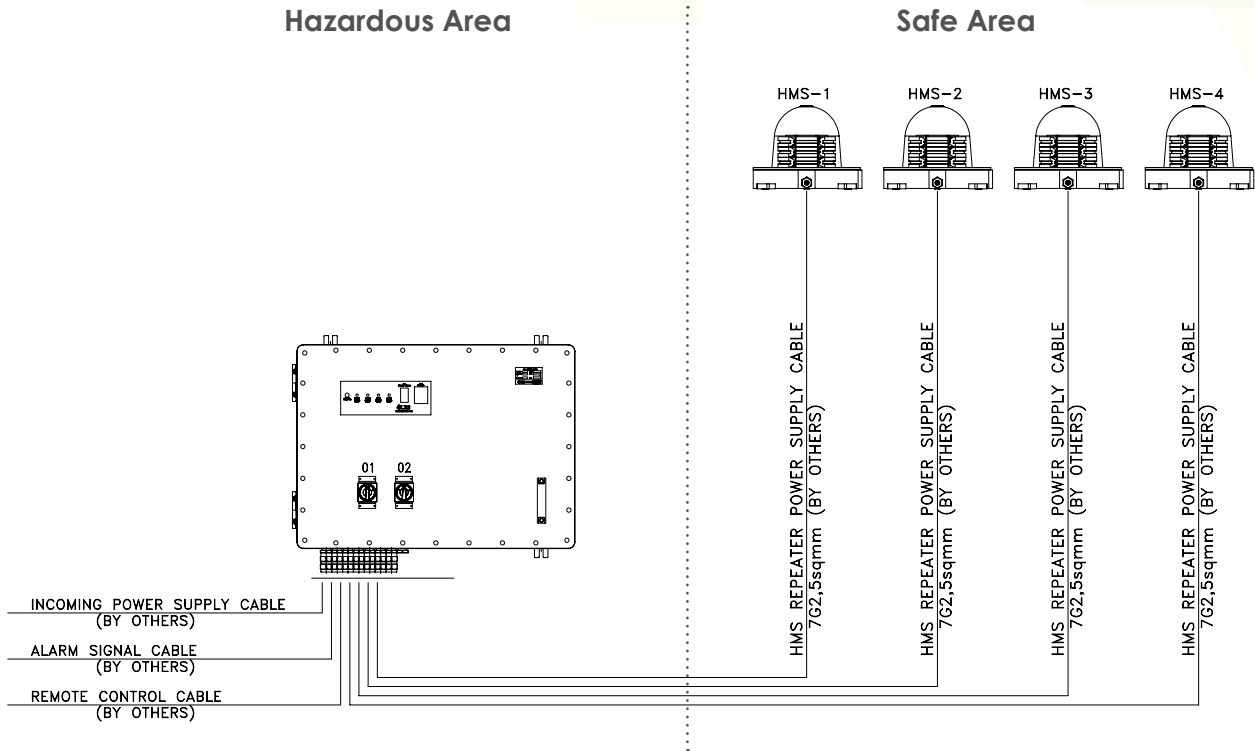
### TOP FIXING



# HELIPORT LIGHTS

## REPEATER STATUS LIGHT TECHNICAL DRAWINGS

### TYPICAL CONFIGURATION HAZARDOUS AREA PANEL



### TYPICAL CONFIGURATION SAFE AREA

