

LOW INTENSITY

LOW INTENSITY OBSTRUCTION LIGHT CAP 168 - GROUP A



As specified by CAP 168 'Licensing of Aerodromes', Low Intensity Obstruction Lights have to be used to warn the presence of obstacles up to 45m height.

This beacon is the simplest device according to CAP 168 standards. It provides steady burning red light with two types of intensity: $\geq 10\text{cd}$ for **Group A Ex** and $\geq 200\text{cd}$ for **Group B Ex**.

Low intensity obstacle lights **Group A Ex** have to be used to light obstacles on the aerodrome movement area or when **LIOL Group B Ex** may cause dazzle.

Low intensity obstacle lights, **Group B Ex**, have to be used on obstacles located away from the movement area or on the movement area with high levels of background illuminance.



LOW INTENSITY

LIOL Group A Ex LOW INTENSITY OBSTRUCTION LIGHT

Twilight sensor*

Group A: >10cd

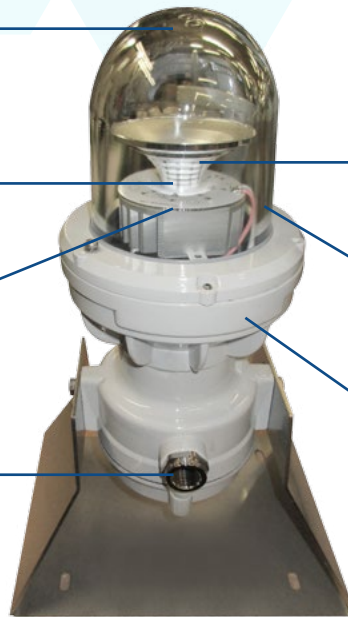
- ▶ Standard circuits or TWIN*
- ▶ Infrared version*

Cable gland M25x1,5

Based on LED technology
Red steady burning light

Borosilicate glass dome

Painted RAL 7035 aluminium body



*as option

IP66



Low Intensity Obstruction Light is compliant to CAP 168 'Licensing of Aerodromes', ATEX, IECEx and TRCU certified.

The light fixture is designed for hazardous areas Zone 1/21, 2/22 with Ex db IIC and Ex tb IIIC protection, compliant to EN/IEC60079-0, EN/IEC60079-1 and EN/IEC60079-31 standards.

With a compact body, high quality and **ultra-bright LEDs**, **optical reflector for an optimum beam spread**, LUXSOLAR L810-LXS-Ex product is **your best choice for an efficient, long life and reliable Aircraft Warning Obstacle Light**.

CERTIFICATION



FEATURES



TYPICAL APPLICATION



LOW INTENSITY

LIOL Group A Ex TECHNICAL SPECIFICATIONS

OPTICAL FEATURES

- Based on LED technology
- RED light - Steady Burning
- LIOL Group A Ex: >10 cd
- Cd emission: +6° e +10°
- Horizontal beam radiation: 360°
- Vertical beam spread 0° to +30°
- Optical reflector

MECHANICAL FEATURES

- Painted RAL 7035 aluminium body
- Borosilicate glass dome
- Degree of protection: IP66
- Operating temperature: -52°C to +60°C
- Lamp unit weight: 7kg
- ATEX marking:
II 2GD Ex de IIC T4 Gb, Ex tb IIIC T135°C Db
- IECEx marking:
Ex de IIC T4 Gb, Ex tb IIIC T135°C Db
- EA9C RU marking:
1 Ex db e IIC T6...T3 GbX,
Ex tb IIIC T135°C...T200°C Db X

ELECTRICAL FEATURES

- Power supply AC or DC or from Luxsolar Control Panel
- Average power consumption for LIOL GROUP A Ex (steady burning): 6W
- LED feeded at constant current

OPTION

- TWIN version: two separate LED circuits in the Automatic changeover from normal to backup light
- Fault contact
- IR Wavelength - 850nm, compatible with pilot's NVG

APPLY TO

- Stack
- Chimney
- Tower crane
- Offshore Platform
- Chemical and petrochemical plant

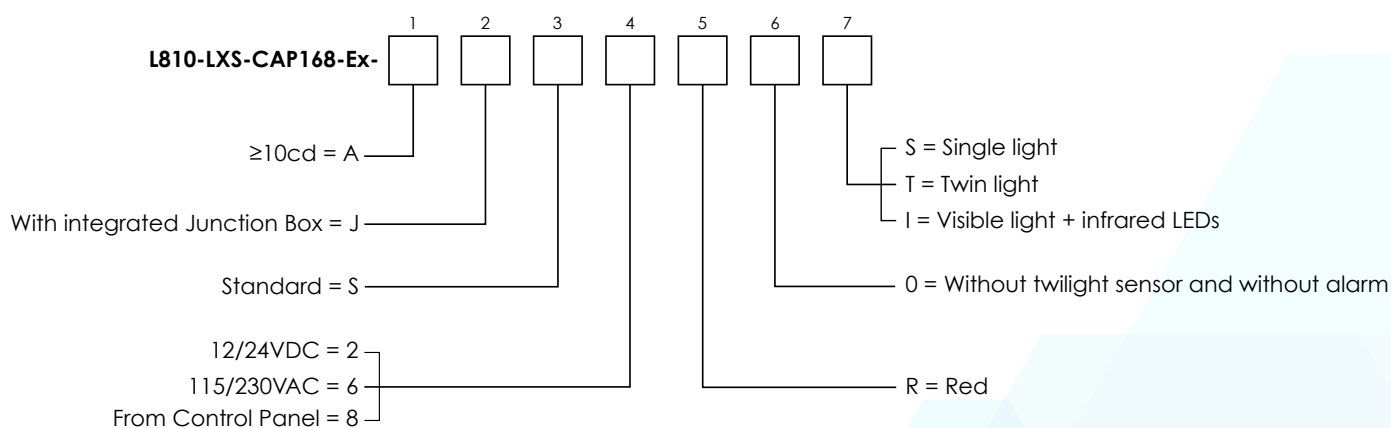
CERTIFICATION

- ATEX certificate
- IECEx certificate
- TRCU certificate
- CAP168 test report (EN 17025 approved laboratory) nr. 1044-QL18-R04
- CE marking

COMPLIANCE

- CAP168 Licensing of Aerodromes, Ch. 4: The Assessment and Treatment of Obstacles
- CAP437: Chapter 4th "Visual Aids"

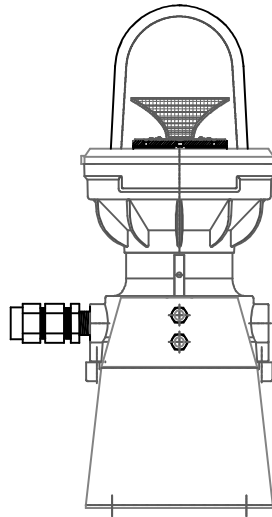
ORDER CODE



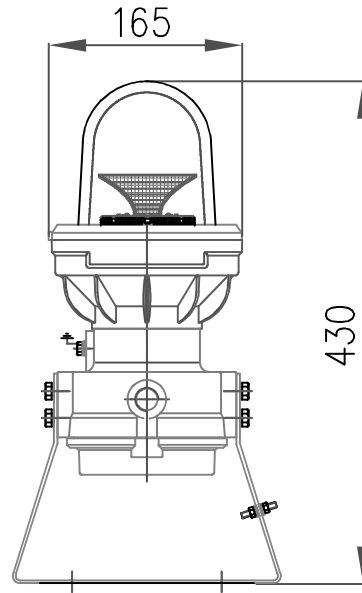
LOW INTENSITY

LIOL Group A Ex TECHNICAL SPECIFICATIONS

BEACON FRONT VIEW

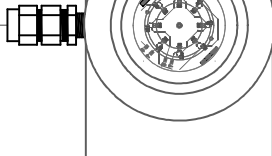


BEACON SIDE VIEW



BEACON TOP VIEW

LIOL-B POWER SUPPLY CABLE
c/w cable gland ISO M20x1.5



FIXING DETAILS

