

# MEDIUM INTENSITY

## MEDIUM INTENSITY OBSTRUCTION LIGHT ALL-IN-ONE



**PATENTED**  
PATENT ACHIEVED WITH THE CONTRIBUTION  
OF REGIONE LOMBARDIA, CALL FOR BIDS  
"RESEARCH & INNOVATION MEASURE F"

According to ICAO Annex 14, Medium Intensity Obstruction Lights - Type B or C - have to be used when the structure, that may constitute an hazard to air navigation, is an extended type with height below 45mt or it has an height above 45mt.

**LUXSOLAR MIOL-B/C ALL-IN-ONE beacon is the ideal solution to have in one compact light fixture TWIN version, built-in remote fault monitoring, photocell and GPS synchronization.**



Drawings, photos and contents of this document are for informational purposes only and subject to change without any notice.

# MEDIUM INTENSITY

## MIOL-B/MIOL-C ALL-IN-ONE

Patented chimney effect for optimum cooling of the beacon

Borosilicate glass cover protection

Stabilised light output: 2.000cd

TWIN Circuit

Patented optical lens fastened with metal clamps

Anti-condensation Gore-Tex valve

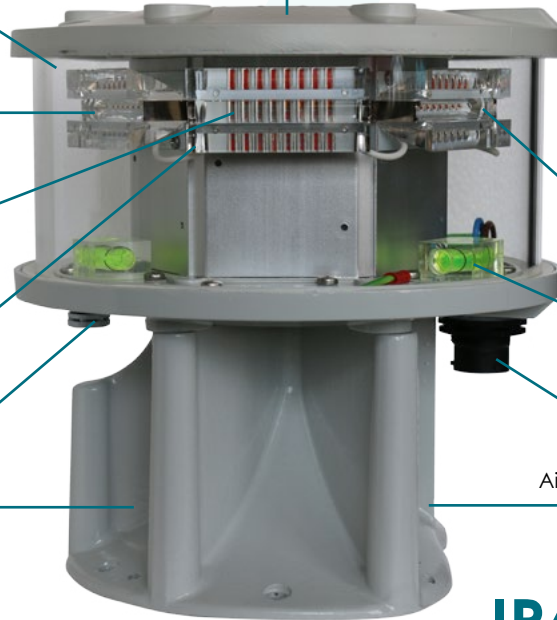
Anodised aluminium body

- ▶ Based on LED technology
- ▶ Red flashing light (MIOL-B)
- ▶ Red steady burning light (MIOL-C)

Spirit level

Power connector  
PLUG&PLAY: IP68/69k

Air-cooling system for +65% heat dissipation



### IP66

## INTERNATIONAL PATENTS: GRANTED AND PENDING

LUXSOLAR Medium Intensity Obstruction Light (MIOL) is certified by ENAC (Italian Civil Aviation Authority) and DGAC-STAC (French Civil Aviation Authority) as **fully compliant with ICAO Annex 14 rule (MIOL-B and MIOL-C Type)**. The beacon also respects the photometric requirements defined in FAA regulation.

This device is the ideal solution for an **efficient, lightweight, low consumption** and **compact** obstacle LED Aircraft Warning Light; its circular shape helps reducing the wind load factor and guarantees an **omnidirectional light emission**. Thanks to a **patented air-cooling system** that increases the heat dissipation through natural air, the expected life-time of the lamp is **higher than 10 years**.

LUXSOLAR **MIOL-B** Aircraft Warning Light emits **red flashing light** and **MIOL-C** Aircraft Warning Light emits **red steady burning light**.

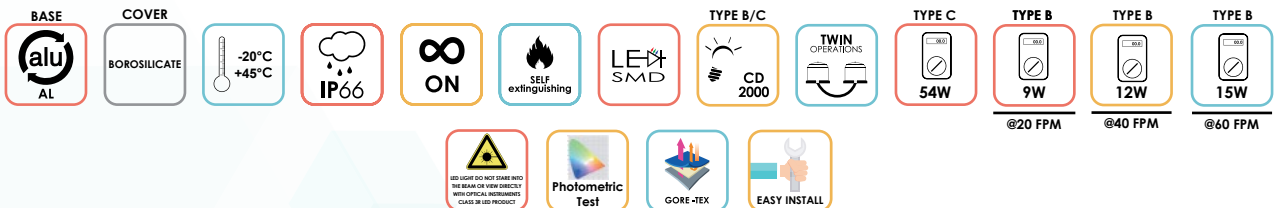
### CERTIFICATION



### COMPLIANCE



### FEATURES



### TYPICAL APPLICATION



Drawings, photos and contents of this document are for informational purposes only and subject to change without any notice.

# MEDIUM INTENSITY

## MIOL-B/MIOL-C ALL-IN-ONE TECHNICAL SPECIFICATIONS

### OPTICAL FEATURES

- Based on LED technology
- RED light 2.000cd
- Cd emission @ -0,5° and +4°
- Horizontal beam radiation: 360°
- Vertical beam spread: 4°
- PMMA lens (PMMA)
- Light output alignment device

### MECHANICAL FEATURES

- Borosilicate glass cover protection
- RAL 7035 painted aluminium lamp body
- GRP black colour box
- Silicon gasket
- Bottom wind collector for central heat-sink cooling
- Degree of protection: IP66
- Anti-condensation Gore-Tex valve
- Operating temperature: -20°C to +45°C
- Storage temperature: -20°C to +45°C
- Lamp unit weight: 6kg
- Twin version: two separated circuits in the same light fixture
- Beacon support bracket

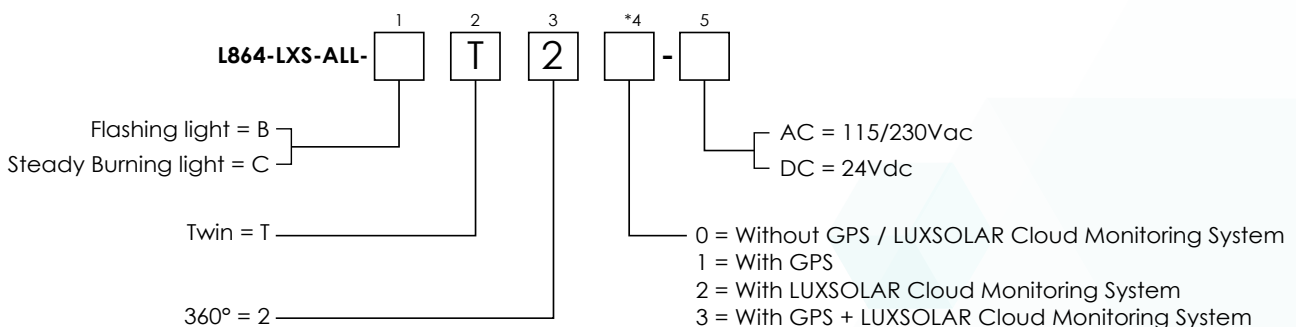
### GENERAL OPTIONS

- GPS (Global Position System) Sync
- Power Supply 110/230 Vac

### ELECTRICAL FEATURES

- Power supply 24VDC (18-32VDC)
- Alarm/remote status control
- Average power consumption for MIOL-B (flashing):
  - @20fpm: 2,4W
  - @40fpm: 3,72W
  - @60fpm: 5,04W

### ORDER CODE



- Average power consumption for MIOL-C (Steady Burning): 20,9W
- LED feeded at constant current
- Surge arrester
- No RF-radiations
- Fault alarm
- Automatic changeover from normal to backup light
- Photocell (twilight sensor) / astronomic clock
- Recommended cables (Outdoor) for ACW versions:
  - Power (L-N-PE): 3x1,5mm<sup>2</sup> or 3x2,5mm<sup>2</sup>
  - Alarm: 2x1mm<sup>2</sup>
- Cable outer diameter range: 7mm to 14mm

### APPLY TO

- Airport - Stack - High building - Chimney - Tower crane
- Pipe line - Bridge - Radio and television tower
- Transmission line - Wind turbine - Wind mast measurement
- Radar - Antenna

### COMPLIANCE

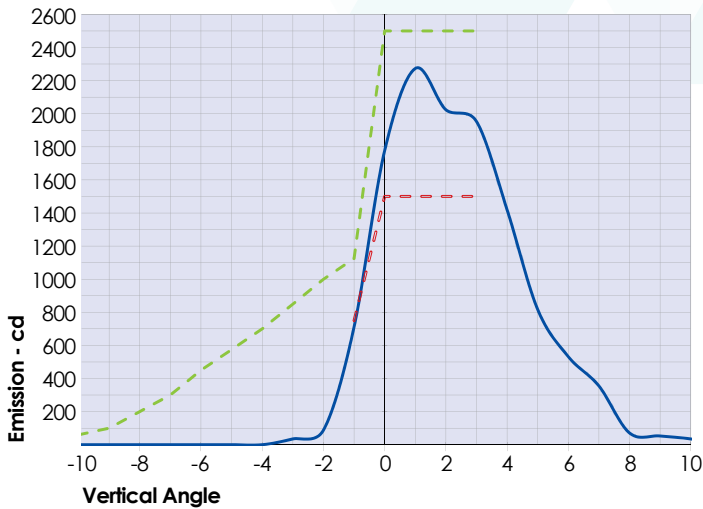
- ICAO Aerodromes - Annex 14 Vol. 1, Ch.6: Medium intensity, Type B flashing obstacle light MIOL-B type or Type C steady burning obstacle light MIOL-C type
- FAA AC150/5345-43 E.B. #67 type L-864
- CAP168 Licensing of aerodromes, Ch.4

### CERTIFICATIONS

- DGAC/STAC approval nr. 2013A037
- ENAC approval nr. 0135182/ENAC/CIA
- CE marking

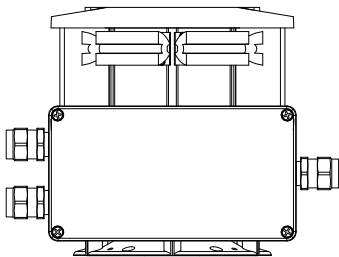
# MEDIUM INTENSITY

## MIOL-B/MIOL-C ALL-IN-ONE TECHNICAL SPECIFICATIONS

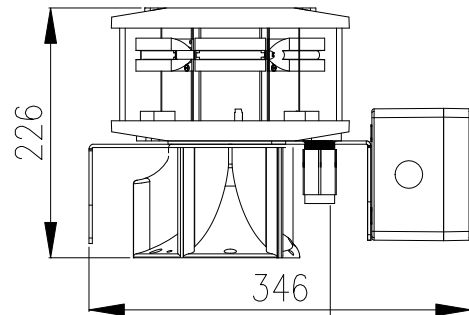


— L864-LXS-B/C average emission level at 90°C ambient temperature  
- ICAO ANNEX 14 medium intensity type B/C Min. Required Intensity  
- ICAO ANNEX 14 medium intensity type B/C Max. Required Intensity

### BEACON FRONT VIEW

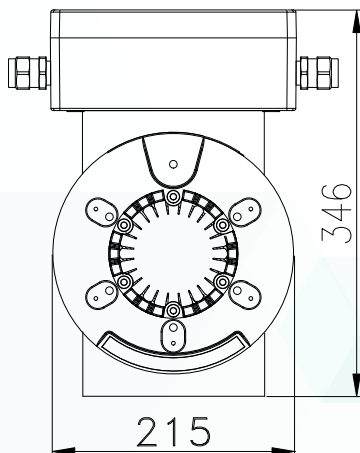


### BEACON SIDE VIEW

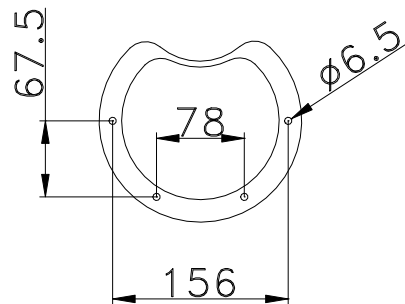


INCOMING POWER SUPPLY CABLE  
C/W CONNECTOR (CABLE DIAMETER 7/14mm – max. 2,5sqmm)

### BEACON TOP VIEW



### FIXING DETAILS



Drawings, photos and contents of this document are for informational purposes only and subject to change without any notice.