

IDENTIFICATION BEACON



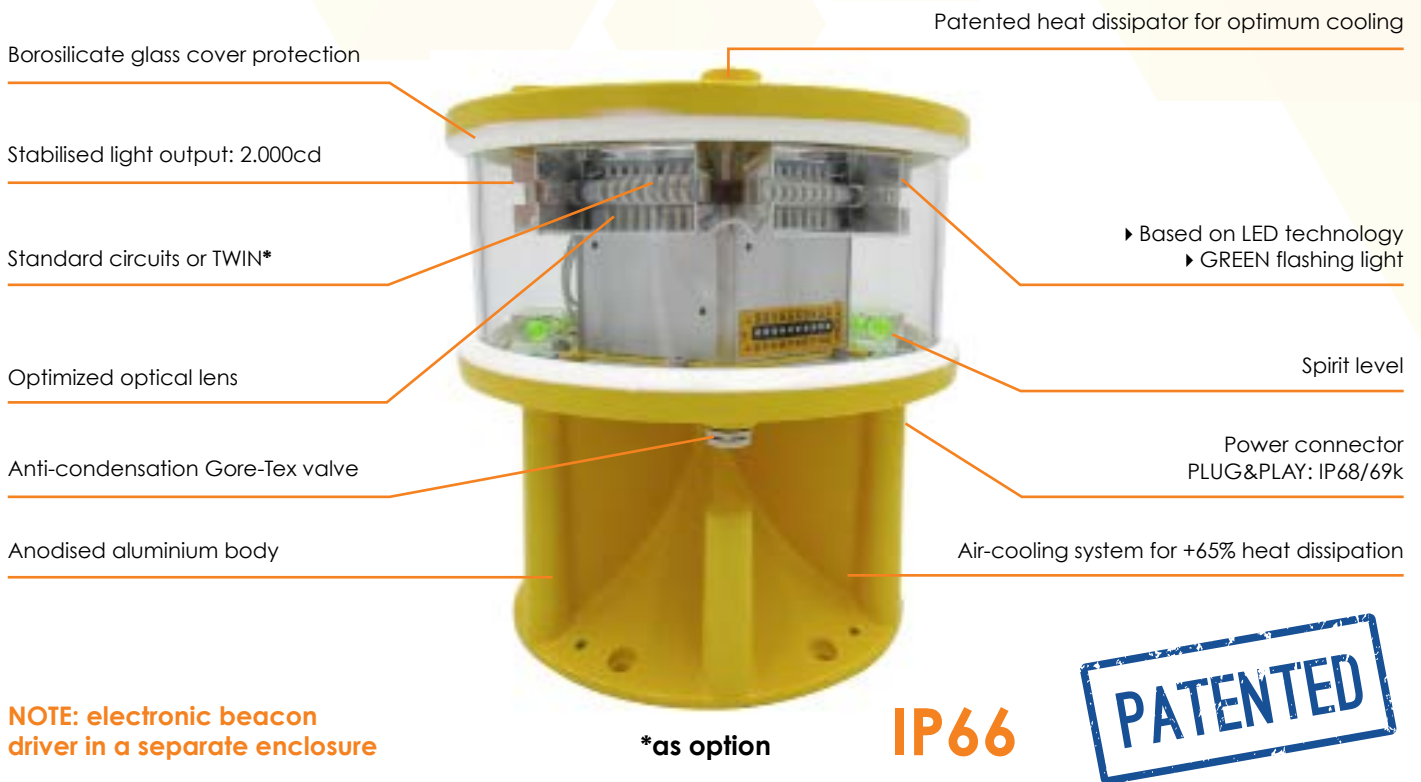
According to **Annex 14 of ICAO regulations**, Aeronautical Beacons should be provided at airports intended for use at night.

An Identification Beacon shall be provided where the airport, due to the location or high background luminance, cannot be easily identified from the air by other identification means.
The light **displays a green or yellow flashing light in the International Morse Code that identifies the airport**, and ICAO or IATA Airport Letters can be used.



ICAO AERONAUTICAL BEACONS

IDENTIFICATION BEACON



LUXSOLAR IDB-LXS Aeronautical Identification Beacon is **compliant and tested as fully compliant to ICAO rule.**

With a compact body, high quality and **ultra-bright LEDs**, **customized lenses** and **patented shape for optimum light emission and beacon cooling** LUXSOLAR IDB-LXS product is the most **up-to-dated and technologically advanced Aeronautical Beacon.**

This LED device is designed to **not contain any electronic component** (that is available in a separate control local panel): a huge **advantage in terms of increased life-time and suitability to all environments** (beacons can stand extreme weather conditions) and in terms of an **easy maintenance** (in case of maintenance or periodic checks on electronic components, these can be done at ground or easily accessible levels).

CERTIFICATION



COMPLIANCE



FEATURES



TYPICAL APPLICATION



ICAO AERONAUTICAL BEACONS

IDENTIFICATION BEACON TECHNICAL SPECIFICATIONS

OPTICAL FEATURES

- Based on LED technology
- GREEN light 2.000cd, night mode
- Airport IATA/ICAO Morse Code Flash
- Horizontal beam radiation 360°
- Vertical beam spread >1°
- PMMA lens
- Light output alignment device

LIGHT MECHANICAL FEATURES

- Anodised aluminium body, painted yellow
- Borosilicate glass cover protection
- Silicon rubber, VMQ
- Base wind collector and internal heat sink for optimum cooling
- Degree of protection: IP66
- Anti-condensation Gore-Tex valve
- Operating temp.: -30°C to +50°C
- Lamp unit weight: 6kg

BOX MECHANICAL FEATURES

- Enclosure material: mild steel, painted RAL 7035
- Surge arrester
- Fault alarm
- Photocell (twilight sensor)
- Overvoltage protection

ELECTRICAL FEATURES

- Power supply by LUXSOLAR controller box
- Suitable for 24Vdc or 115/230Vac power supply
- LED feeded at constant current
- No RF - Radiations

OPTIONS

- Beacon support bracket
- GPS (Global Position System) syncro
- Yellow flashing light for water aerodromes
- TWIN version: two separate LED circuits in the same fixture (normal + stand-by)

APPLY TO

- Airports intended for use at night and that can not be easily identified from the air by other means;
- Used to specifically identify the presence of an aerodrome.

CERTIFICATIONS

- ICAO test report (EN 17025 Laboratory) NR. 466-QL19-R02
- CE marking

COMPLIANCE

- ICAO Aerodromes -Annex 14 Volume 1, Par. 5.3.3 "Aeronautical Beacon"

PART NUMBER

- **IDB-LXS-IATA-AIRPORT CODE* 230VAC**
- **IDB-LXS-IATA-AIRPORT CODE** 24VDC**
- **IDB-LXS-ICAO-AIRPORT CODE*¹ 230VAC**
- **IDB-LXS-ICAO-AIRPORT CODE**¹ 24VDC**

* Example: Identification beacon for Amsterdam Airport, part number will be: IDB-LXS-IATA-AMS-230VAC

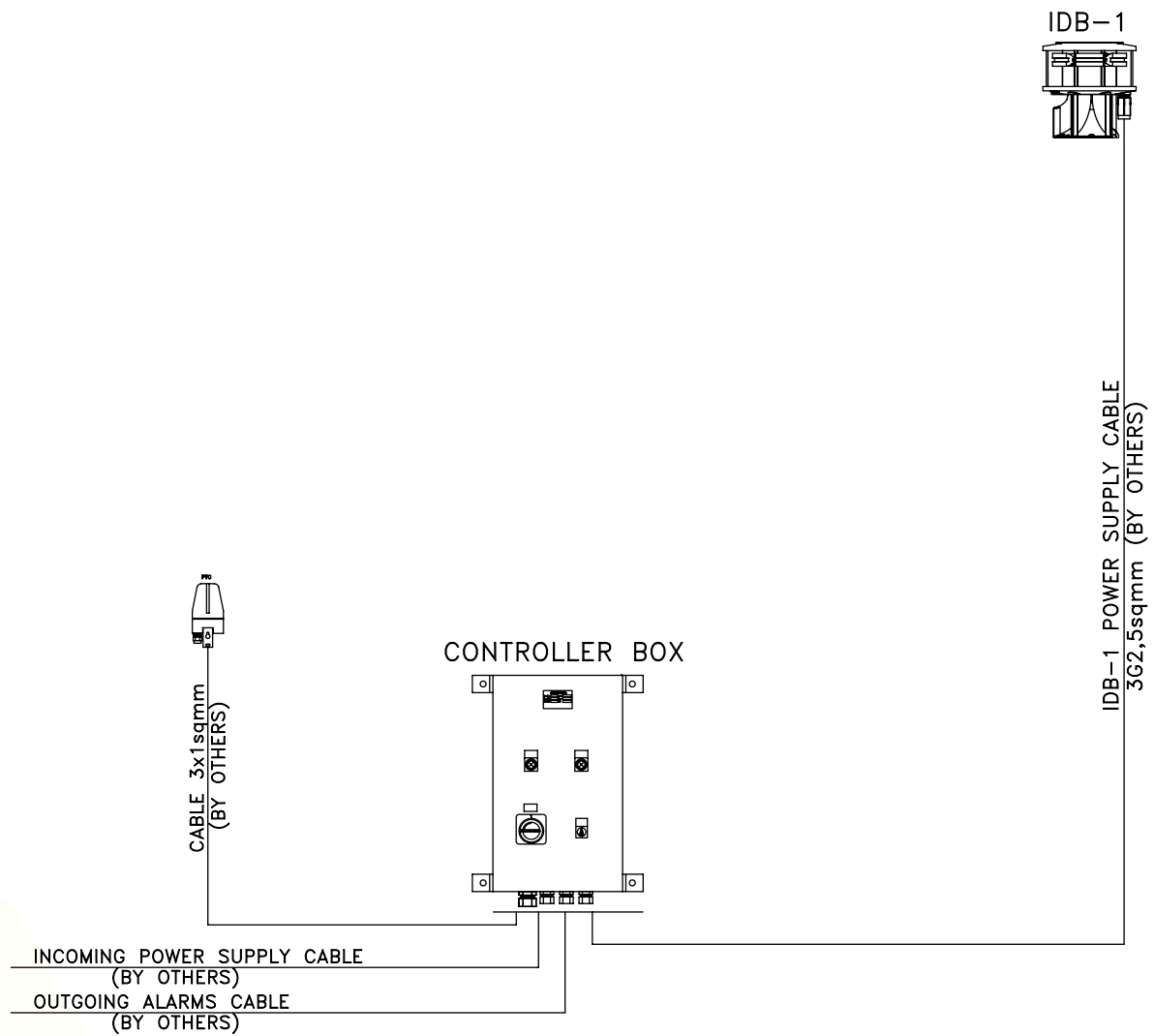
** Example: Identification beacon for John F. Kennedy Intl., part number will be: IDB-LXS-IATA-JFK-24VDC

*¹ Example: Identification beacon for Malpensa Airport, part number will be: IDB-LXS-ICAO-LIMC-230VAC

**¹ Example: Identification beacon for Madrid Barajas Airport, part number will be: IDB-LXS-ICAO-LEMD-24VDC

ICAO AERONAUTICAL BEACONS

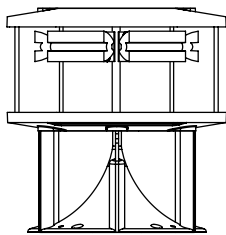
IDENTIFICATION BEACON TECHNICAL DRAWING



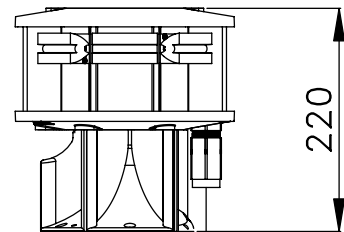
IDENTIFICATION BEACON TECHNICAL DRAWING

BEACON DETAIL

BEACON FRONT VIEW

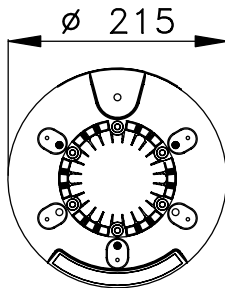


BEACON SIDE VIEW

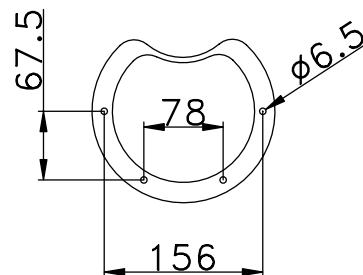


INCOMING POWER SUPPLY CABLE
C/W CONNECTOR (CABLE O.D. 7/14mm, Max size 2.5sqmm)

BEACON TOP VIEW



FIXING DETAILS

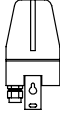


ICAO AERONAUTICAL BEACONS

IDENTIFICATION BEACON TECHNICAL DRAWING

PANEL DETAIL

TWILIGHT
SENSOR
05



TO BE INSTALLED OUTSIDE
LOOKING FREE SKY NORTH
SUPPLIED AS LOOSE ITEM

